

**4550 W. 7TH AVE.,
VANCOUVER, B.C.**

UPPER FLOOR	743	SQ. FT.
MAIN FLOOR	910	SQ. FT.
BASEMENT	881	SQ. FT.
TOTAL	2534	SQ. FT.

DECK	130	SQ. FT.
PATIO	87	SQ. FT.
PORCH	48	SQ. FT.

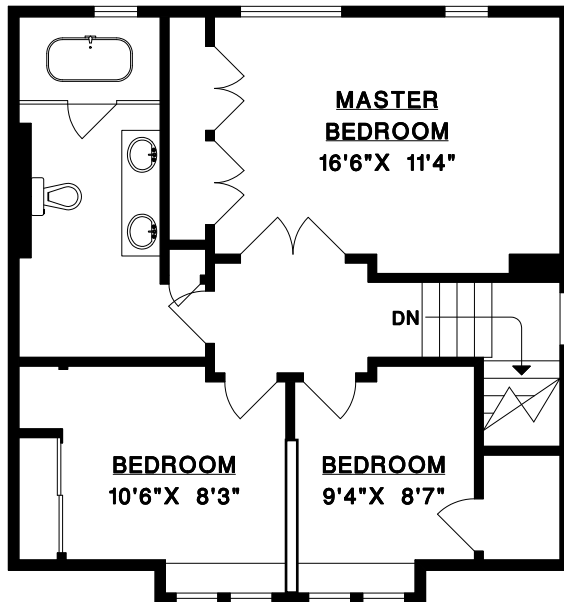


Rhonda Davis
RE/MAX Crest Realty Westside
3215 Macdonald Street
Vancouver, BC V6L2N2
Phone: 604-808-4440

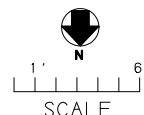
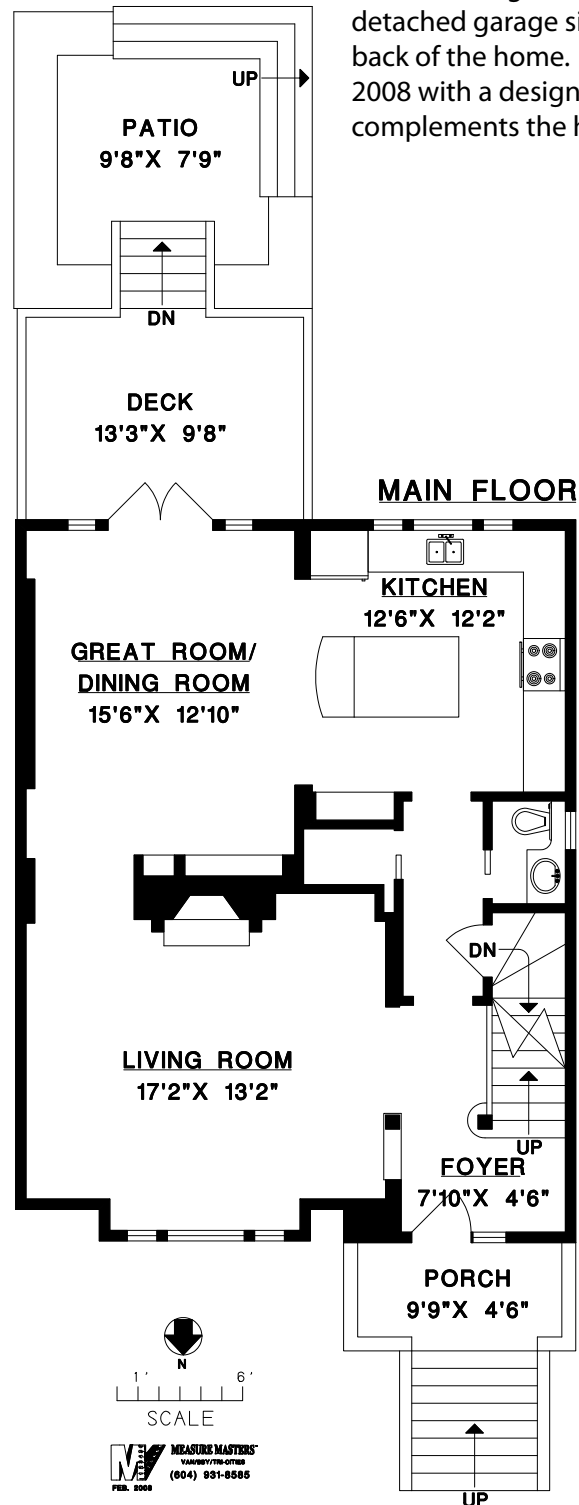
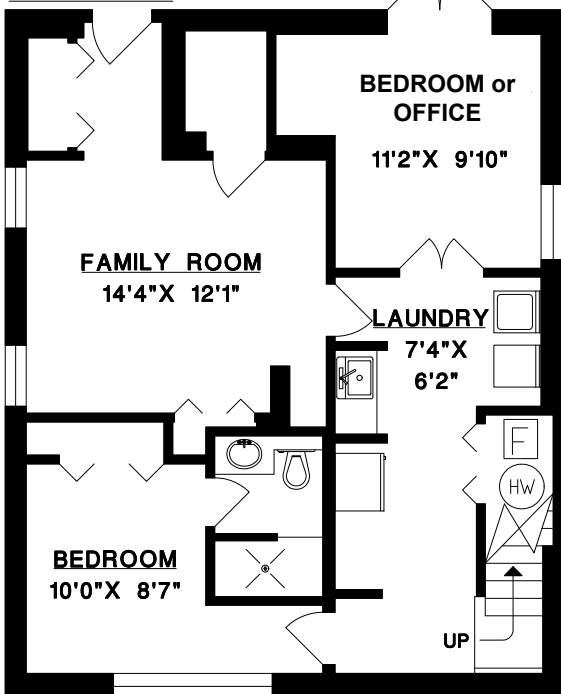
Garage Note:

There is a single vehicle, detached garage situated at the back of the home. It was built in 2008 with a design & finish that complements the home.

UPPER FLOOR



BASEMENT



MEASURE MASTERS
VANCOUVER/SEASIDE
(604) 931-8885
FEB. 2008